

The Friary School

SIXTH FORM PROSPECTUS





Messages From Our Students



Changes to A levels and UCAS tariffs



We look forward to welcoming you into the Sixth Form next year.

Will Moseley and Grace Williams
Head Boy and Head Girl

“The Friary School has allowed me to build great friendships, build resilience and improve my interpersonal skills that will help me in the future.”

Lydia Bedlow

“Since starting at The Friary School for year 12 I have loved studying new A-level subjects and have felt supported by staff and my fellow peers throughout my sixth form experience.”

Rosie Bentley

“Throughout my time at The Friary’s Sixth Form, I have gained independence and watched my confidence flourish.”

Amelia Fradley

“With the various methods of support, I feel I can always get the

best out of my subjects.” Flynn Mulligan
“The Friary Sixth Form is a friendly environment which has supported me to progress with my studies as well as helping me to become more independent.”
Amy Hirst

Changes to A Levels and BTEC Qualifications
All courses for students beginning Level 3 qualifications in September 2022 are now linear. This means that A Levels started in September 2022 will be examined in June 2024 at the end of two years of study. Coursework will also be submitted at this point. Further information on individual subjects is available in the subject pages.

Students are required to study three subjects in Year 12 and will continue with three subjects in Year 13. However, it may be possible for a student to study Further Mathematics in addition to Mathematics as a fourth A Level.

Please note that BTEC courses are now following new syllabuses and contain an examination element. For more information, please see the subject pages. BTEC Level 3 Extended Certificates are submitted at the end of Year 13 and are equivalent to an A Level.

UCAS Tariffs
All Level 3 qualifications earn UCAS points. These are used by many universities to set their entry requirements. It is important to consider these when selecting post-16 courses.

48	A		Distinction		
40	B				
32	C		Merit		
28				Distinction*	A*
24	D			Distinction	A
20		A			B
16	E	B	Pass	Merit	C
12		C			D
10		D		Pass	
8					E
6		E			



Frequently Asked Questions

5

What are the entry requirements for Sixth Form? Please see page 9.

How do I apply to Sixth Form?

Applications should be made electronically via The Friary School website, through our online applications form. All applicants are offered an interview. Prospective students are very welcome to contact the Head of Sixth Form to arrange to have a tour of the school and an informal meeting, before applying. After being interviewed, candidates will be sent a letter confirming whether they have been successful or not in their application.

How many subjects will I study? Please see Page 9.

What facilities are there for Sixth Form Students?

We expect students to work hard, so it is only reasonable for them to have excellent facilities to work hard in! There is a refurbished Sixth Form Centre with computers available (see page 31). Students can also use the Library during lessons, at lunchtime and before and after school. All students also have guided study sessions. In these sessions, students go to the Sixth Form Centre and are expected to work independently.

How are students supported in the Sixth Form? Please see page 8 for more information.

What do students from The Friary Sixth Form go on to do after they leave?

We are proud that The Friary School has a long-standing track record of its students gaining places at top universities, including Oxbridge and Russell Group, in a wide range of subject areas including Medicine, Law, English Literature, Mathematics, History, Sociology, Biology, Accountancy, Physics and Nuclear Physics, Optometry, Veterinary Science, Architecture, Chemistry, Genetics, Computer Science, Geography, Music, Business Management and Neuroscience. Students

6

also go on to successfully gain places on Higher Level apprenticeships with companies such as Nestlé and Jaguar Land Rover.

All students get intensive support with UCAS applications and interview techniques, access to careers interviews and guidance on student finance etc.

How are students supported in making the transition to Sixth Form study?

Adapting quickly to the demands of post-16 study is of course vital. Every subject offers a Bridging Unit, which is completed by students over the long summer holiday after GCSEs finish. This allows students to keep their skill levels high and to gain a good idea of the requirements of courses.

Can you do work experience in the Sixth Form?

All students complete a week of work experience at the end of Year 12. In addition, students can opt to do work experience as their enrichment opportunity. Support is given with finding placements and all appropriate health and safety assessments are completed.

What are Enrichment Opportunities?

All students take part in at least one enrichment opportunity. These allow students to undertake additional qualifications or activities that enhance their personal development in the Sixth Form. They also enable them to develop useful skills and enhance their CVs. Enrichment opportunities include the Extended Project Qualification (EPQ), Performing Arts Awards, the Level 2 Sports Leadership award, regular work experience and community service.

What is the EPQ?

The Extended Project Qualification, EPQ, is a Level 3 Advanced qualification which is highly regarded by most universities. You will undertake a high level project which can be in various formats in an



Frequently Asked Questions

area of your interest and choice. The skills you learn and develop, which include independent study, research, academic writing and all aspects of presentation, prepare you well for university or an apprenticeship. Current research shows these skills not only help to improve your A Level performance in other subjects but increase your confidence in terms of future study.

What extra-curricular opportunities are there in the Sixth Form? All students are encouraged to get involved in Sixth Form life through extra-curricular activities. Some are organised by staff and others by the students themselves. Many students get involved in theatrical productions (of which there are many!), the Encore variety show and musical activities such as the Concert Band, Jazz Band, Senior Choir and Chamber Orchestra. Each year we have the Battle of the Bands and a Summer Sizzler festival where many student-led bands play.

Many students take part in senior sports teams or make use of the facilities in our Leisure Centre. Students also get involved in community service such as mentoring younger students or helping out at their local primary school on a regular basis.

What is the role of the Senior Students?

Each year a number of Year 13 students are appointed to Senior Student roles, after applying for the roles and being interviewed. The Senior 7 meet fortnightly with the Head of Sixth Form to represent the views of Sixth Form students. They also organise events for the Sixth Form including the Leavers' Prom, charity events and they lead the Student Council.

What is The Apollo Group?

Many students who have the potential to apply to the very best universities or higher level apprenticeships also take part in our Apollo Group programme. These students attend talks delivered by Russell Group Universities, receive specific interview technique training and subject specific entrance exam training and are invited to attend Oxbridge conferences.

What is the dress code for Sixth Form Students?

The dress code is office wear. Full details are available on the Sixth Form section of the website.

What is the consortium?

Because no school can offer every subject or combination of subjects, The Friary School, along with our partner secondary schools in Lichfield and Burntwood, have joined together in a consortium. Most students study all of their subjects at The Friary, however, if a subject is unavailable here, they can apply to study one of their subjects at one of the other schools. The lessons would be on one morning and one afternoon per week.

Will every subject definitely run?

Our intention is that every subject that is offered in the prospectus will run. However, as with any establishment, occasionally we have to make amendments to the curriculum offered in light of staffing changes.

What is the Bursary Fund?

The Bursary Fund is available to support Sixth Form students who are from families with a lower income. It can support students by providing funding for such things as educational visits, textbooks, art materials and transport. More information is available on the Sixth Form section of the website.



Guidance, Support and Mentoring



Entry Requirements

Guidance, Support and Mentoring

At The Friary School Sixth Form we are of course focussed on the academic success of our students. However, we believe that for students to achieve their undoubted potential, they need to feel safe, secure, happy and confident. We want our students to receive the best advice and support possible to allow them to make sensible, informed and successful choices in their lives. Therefore, we provide the following:

The Sixth Form Team

The Sixth Form team consists of Mrs Barratt (Assistant Headteacher – Post 16), Mrs Jones (Head of Sixth Form), Mrs Stubbs (Sixth Form Mentor and Administration), and Miss Banks (Aspirations and Careers Mentor). The team is based in the Sixth Form Centre and their role is to support students when they encounter issues that have become barriers to learning, both in and out of school. They also liaise with staff, parents and outside agencies.

Sixth Form Tutors

We are fortunate to have a very experienced and dedicated team of Sixth Form Tutors. Every student is in a tutor group. The tutors monitor student progress, liaise with the Sixth Form Team if any concerns are raised, monitor attendance, write references and generally act as the first port of call for students who want to raise any concerns of their own.

The Sixth Form Tutorial Programme

All students attend PSHE and careers sessions as part of the tutorial programme. Sessions focus on post-16 specific issues such as driver safety, student finance and UCAS. Sessions are led by the Sixth Form Team, tutors and also external speakers.

Careers Advice and Guidance and University Applications

7

All students have the opportunity to have careers meetings with our Careers Advisor and our Aspirations Mentor. Parents are welcome to attend meetings too. The Sixth Form Team will also support students in finding work placements and in constructing CVs etc. Sixth Form

8

tutors support students in writing their personal statements. All students then have a review of their personal statement and their reference, as part of the UCAS process, with their tutors and the Sixth Form Team.

Communication with Parents/Guardians

The vital link with parents and guardians is maintained through Parents’ Evenings and an annual report. Also, parents receive several Student Profiles that track their child’s progress against their target grades. In addition, parents and guardians can rest assured that if we have any concerns, we will contact you quickly!

Also, a Sixth Form newsletter is produced for parents every term with key information in it. Most importantly, we are very happy and grateful to receive communication from parents if they have concerns over their child’s progress, health and happiness.



Entry requirements for Sixth Form:

The minimum requirements for entry to The Friary Sixth Form are 5 GCSE Grades 9-4 including English Language and Mathematics at Grade 5. Individual subjects also have specific entry requirements. For these, please see the individual subject pages.

If a student has not previously studied a subject, we reserve the right to arrange an interview with the subject leader, so that they can assess the suitability of a student to the subject.

All applicants are interviewed. Alongside an excellent academic profile, we are also interested in students as individuals. We look favourably on candidates who can show a real interest in their chosen subjects, who project a sense of positivity about the opportunities that Sixth Form offers and who have a willingness to contribute to the community both inside and outside of school.

GCSE Profile	Suggested Route
At least 8 GCSEs including a minimum of 6 at Grade 6 or higher	3 A Levels or equivalent Level 3 Qualifications. The Extended Project Qualification is also recommended
8 GCSEs including at least 4-5 at Grade 6 or higher	2 A Levels and 1 Vocational Level 3 Qualification and an enrichment subject/ opportunity
5-7 GCSEs at Grade 4 (5 Maths and English Language) with up to 3 at Grade 6	1 A Level and 2 Vocational Level 3 Qualifications and an enrichment subject/ opportunity
5-7 GCSEs at Grade 4 (4 Maths and English Language) with up to 2 at Grade 6	3 vocational Level 3 Qualifications and an enrichment subject/opportunity

Why study Fine Art?

The Fine Art course at The Friary is engaging and varied, allowing our students to develop personal, creative, thought provoking artwork. When studying Fine Art at The Friary students benefit from a team of experienced art staff and outstanding facilities. Our students are taught a variety of materials and techniques including painting,



drawing, mixed media, sculpture, ceramics, photography and print making in a range of art studios.

What topics are covered?

This course is an excellent progression from the GCSE Art & Design course. Students are able to develop skills in a range of materials through various, independently negotiated themes. Students develop key skills in recording, source analysis and experimenting with a wide

range of materials. Early in the course students develop their abilities by engaging with workshop based teaching, developing their skills in a number of Fine Art areas. This varied and pacey start is designed so that our students find their preferred artistic direction. This course then allows students to sustain and develop their own creativity and vision through an independently negotiated theme to complete their “coursework portfolio.” Students utilise their strong and developed skills in their chosen Fine Art practice and experiment within their

chosen area of Fine Art. They develop a personal rationale seeing their concept through to a finished piece. Students combine academic study with practice based studio work and are expected to submit a distinct written aspect justifying and contextualising their art.

The entry requirements

Candidates will have successfully studied Art & Design at Level 2 gaining a Grade 5 at GCSE.



Art (Fine) AQA



Biology AQA

How is the course assessed?

The course has two components; the Personal Investigation and an Externally Set Task. The Personal Investigation is worth 60% of the A Level qualification with the Externally Set Task making up 40% of the qualification. Both components see the students develop full,

10

coursework style projects which are assessed in 4 key areas: analysis, recording, experimentation and final response.

What skills will I develop through studying Fine Art?

Students develop skills in a range of media, improve their understanding of pictorial space, composition, colour, tone, texture, shape and form. Our students develop strong analytical skills and an understanding of different approaches to art, how ideas and meanings can be conveyed and interpreted and how they relate to social, environmental, cultural contexts and the time and place in which they were created. Through the exhibition of work and regular sharing of views our students develop a passion and confidence that sees them ready for life beyond Sixth Form study.

What career paths does Fine Art lead on to?

Following the study of Fine Art, our students have progressed into a range of different careers, including: advertising, architecture, stage design, interior design, fashion and textiles, graphic design, marketing, photography, product design, film and television industry, conservation, art teaching and lecturing.



The new AQA specifications will help nurture a passion for biology, and lay the foundations for further study and careers in the biological sciences and medicine.

Why study Biology?

Biology involves the study of a wide range of exciting topics, ranging from molecular biology to the study of ecosystems. Biology is never far from the headlines. The human genome has been sequenced and we know the complete arrangement of the three thousand million bases that make up human DNA. In Kenya, 350 people die every day from AIDS and in South East Asia, skies are dark with smoke as the Bornean rainforests are burned to grow oil palms. Biologists are concerned with all these issues, and their work is vital to us all. The Friary has strong links with the Lichfield Science and Engineering Society, and as well as attending the annual Erasmus Darwin Lecture, we also organise an annual Friary sixth form science lecture. There are opportunities to learn from lectures by leading biologists, such as Robert Winston. Recent trips have included the Erasmus Darwin Lectures, Biology Live and a field trip to the island of Capri on the south coast of Italy.

What are the entry requirements? At least grade 6/6 at GCSE Combined Science or grade 6 in GCSE Biology. Students should also achieve at least grade 6 at GCSE Mathematics.

A Level Biology subject content:

- Biological molecules
- Cells
- Organisms exchange substances with their environment
- Genetic information, variation and relationships between organisms
- Energy transfers in and between organisms
- Organisms respond to changes in their internal and external environments
- Genetics, populations, evolution and ecosystems
- The control of gene expression

Assessment:

PAPER 1: Written exam: 2 hours: 91 marks: 35% of A-Level

PAPER 2: Written exam: 2 hours: 91 marks: 35% of A-Level

PAPER 3: Written exam: 2 hours: 78 marks: 30% of A-Level

Where will success take me?

Biology is one of the most popular A Level subjects in the country attracting students studying a wide range of other subjects. Many of these students enjoy the subject so much they eventually choose a biologically related degree course. Others go on to careers in law, computing, accounting or teaching. So, whatever field you will eventually work in, you will find biology a very rewarding and challenging course, which will develop many of the skills essential for a successful career. Biology is a great choice of subject for people who want a career in health and clinical professions, such as medicine, dentistry, veterinary science, physiotherapy, pharmacy, optometry, nursing, zoology, marine biology or forensic science.



Why study Level 3 National Extended Certificate in Business Studies? 11

Business is a major part of everyone's life and those that understand how business works are at an advantage in the future. Business Studies is a readily accessible subject for students of all abilities. The BTEC National uses a combination of assessment styles to give students the confidence that they can apply their knowledge to succeed in the workplace. They provide progression to higher education and ultimately to employment in the business sector.

Business Studies combines very well with many other subjects; e.g. Geography, Mathematics, Languages, PE and Science. It offers you the opportunity to broaden your learning and open up many career prospects. Its close connection to the everyday business world makes this a highly topical and relevant subject.

What topics are covered?

Students will study four topic areas across the two years, which is equivalent to one A Level. In Year 12, you will study 2 units. The first unit is Exploring Business. You will gain an overview of the key ingredients for business success, how businesses are organised, how they communicate,



Level 3 BTEC Business



Chemistry AQA

the characteristics of the environment in which they operate and how this shapes them and their activities. You will also look at the importance of innovation and enterprise to the success of businesses, with the associated risks and benefits.

The second unit covers Personal and Business Finance. Personal finance involves the understanding of why money is important and how managing your money can help prevent future financial difficulties. Business finance will introduce you to accounting terminology, the purpose and importance of business accounts and the different sources of finance available to businesses.

In Year 13, you will study Developing a Marketing Campaign as well as Recruitment and Selection. In the marketing unit you will explore the different stages of the process that a business goes through when developing its campaign as well as developing your own campaign for a given product/service. You will learn that successful recruitment is key to maintaining the success of a business, as people are often considered to be the most valued resource. The Recruitment and Selection unit gives you the opportunity, through

12

role play, to take part in selection interviews.

The entry requirements

It is recommended you achieve at least a Merit at BTEC Level 2 or a Grade 4 in GCSE Business Studies, if previously studied. However, students who have not studied Business Studies can choose the subject.

How is the course examined/assessed? There is a combination of assessment styles to give you confidence that you can apply your knowledge to succeed in the workplace. In Year 12 you will complete a series of coursework tasks for Unit 1. The Finance unit will be assessed under exam conditions. In Year 13, there will be another coursework unit as well as a written external assessment. For the written assessment you will be given a case study the day before the assessment in order to be familiar with the research data and information provided. You will then be required to prepare a rationale and then a plan for a marketing campaign for a given product or service.

What career paths does Business Studies lead on to?

The skills gained on a Business Studies course allow students to build on their commercial awareness. Business Studies students can progress into a range of career options including management, sports business management, accounting and finance, fashion, marketing, law, recruitment and retail.



Why study Chemistry?

Chemistry is involved in most processes; from the functioning of the human body, to the manufacture of everyday materials and the creation of elements within stars. Knowledge of chemistry helps us to understand the world around us. At The Friary you will be taught by experienced subject specialists with a real passion for chemistry.

What topics are covered?

In the first year, students explore the fundamental principles that form the basis of chemistry such as atomic structure, bonding, periodicity and an introduction to organic chemistry. Students then study these areas further by looking at the applications of these principles. In the second year, students will further develop the concepts and principles introduced previously through topics including equilibria, polymers, aromatic chemistry, thermodynamics, energetics and inorganic chemistry.

How is the course assessed?

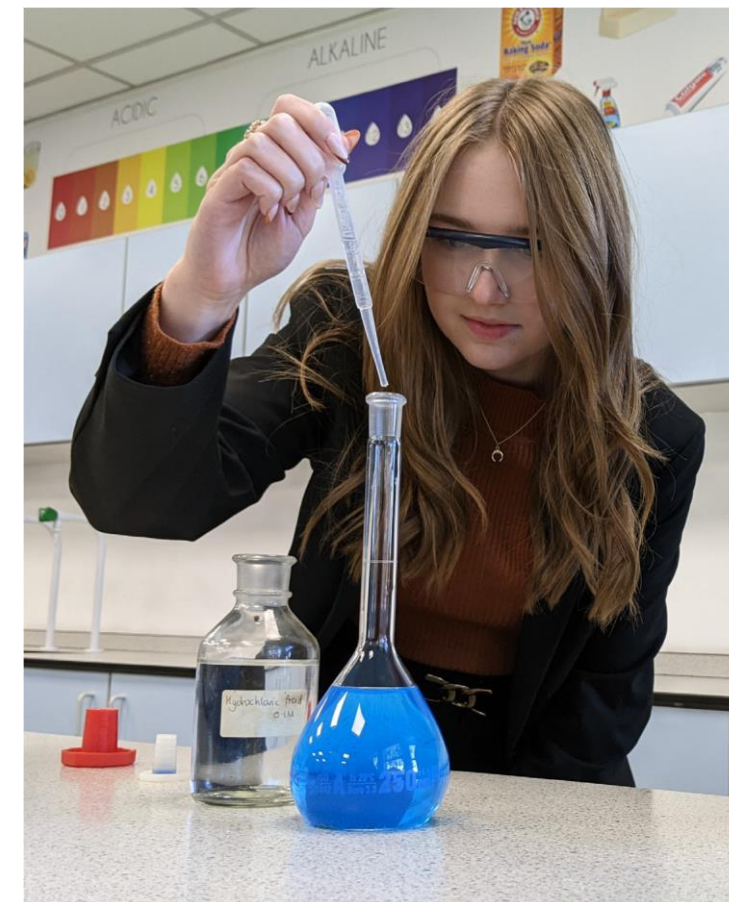
Students will take three written examinations (two worth 35% and one worth 30%) at the end of the two year course. Practical work will be assessed in the written papers. Approximately 15% of the total A-Level marks will be for practical knowledge and understanding. Students will also need to complete a minimum of twelve practicals set by the exam board. These will be assessed internally and do not contribute to the overall A Level grade but if students pass, a separate 'endorsement' of practical work will be reported on their certificate.

The entry requirements

At least grade 6/6 at GCSE Combined Science or grade 6 in GCSE Chemistry. Students should also achieve at least grade 6 at GCSE Mathematics.

What skills will I develop through studying the subject?

Students will gain experience of a wide range of practical skills and develop their evaluative skills by considering the quality of results and how to improve experimental methods. Studying chemistry also develops analytical and problem solving skills, encouraging students to answer questions in a concise and logical fashion. These alongside other transferable skills, such as research, clear communication and independent study, ensure Chemistry A Level complements many other subjects.



13

Why study BTEC Level 3 National Extended Certificate in Creative Digital Media Production? This course is suitable for students who want to continue into higher education courses, or want to take up a position in the creative industries sector. If you wish to go to university you will be



Level 3 BTEC Creative Digital Media Production



English Literature AQA

well prepared with study skills that you can transfer to higher education and throughout your career.

How will I be assessed?

BTEC Nationals are assessed using a combination of internal assessments which are set and marked by your teacher, and external examinations.

What topics are covered?

Students will study a number of topic areas across the two years, which are based on magazine production. These may include:

- Media Representations
- Pre-Production Portfolio
- Responding to a Commission■ Digital Magazine Production

What skills will I gain from Creative Digital Media Production?

During the course students develop their employability skills such as taking responsibility for their own learning, developing interpersonal and practical thinking skills and efficiently managing their time to complete tasks and processes. BTEC Nationals provide a vocational context with particular focus on print and online journalism, in which learners can develop the knowledge and skills required for degree courses.

Where can Creative Digital Media Production lead?

This course is taken alongside other qualifications as part of a 2 year programme of learning. This Level 3 BTEC could help you gain entry into careers like broadcasting, journalism or public relations.

14

The entry requirements

Learners who have a Grade 4 or above and/or BTEC qualifications at Level 2 in a range of subjects can access the curriculum.



The entry requirements

You will need at least a Grade 6 at GCSE English Literature and a passion for reading!

During this course you will have the opportunity to:

- Develop knowledge and understanding of literary study within a coherent contextual framework
- Familiarise yourself with all three genres within a shared context, through a combination of close and wide reading
- Consider how readers' responses are shaped by the context, by writers' choices and by other readers' interpretations
- Develop independent, individual interests within a shared context
- Develop a firm foundation for deeper study at A Level
- Move from a defined area of study to the whole of English Literature, from Chaucer to the present day

During this course you will study the following units:

Paper 1: Love Through the Ages

This paper will examine your understanding of the ways different types of love are presented in different forms and contexts. This unit gives you an excellent chance to explore different literary periods, including Chaucer, Shakespeare's plays, romantic poetry and modern prose.

Paper 2: Texts in Shared Contexts

For this paper, you will study literature from 1945 to the present day. You will explore prose, poetry and drama, as well as developing the ways in which you are able to analyse unseen extracts.

Independent Critical Study: Texts Across Time - you will complete a comparative critical study of two texts, at least one of which must have been written pre-1900. You will be required to write 2500 words, in which you analyse the set texts and engage with critical perspectives on them.

The examination board for this specification is:

AQA English Literature Specification A **The assessment for this subject will follow this pattern:**

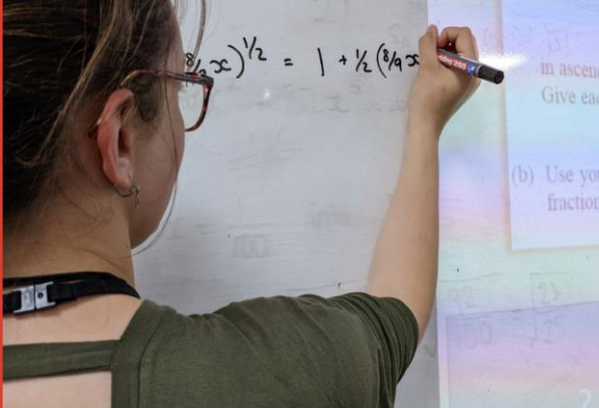
Unit	Marks Available	% of A Level
Paper 1	75	40%
Paper 2	75	40%
Coursework	50	20%



15



English Literature & Language AQA



Further Maths Edexcel

The entry requirements At least a Grade 5 at GCSE English Language and Literature

During this course you will have the opportunity to:

- Develop your ability to write accurately and coherently about a range of texts, using specialist linguistic and literary terms and concepts
- Demonstrate detailed critical understanding in analysing the ways in which structure, form and language shape meanings in a range of texts
- Explore the relationships between different texts and discuss the influence of contextual factors
- Use language creatively for a variety of different purposes and audiences

During this course you will study the following units: Paper 1

- Remembered Places - the representation of place (AQA Anthology)
- Imagined Worlds - point of view and genre in prose (Shelley / Stoker / Atwood)
- Poetic Voices - the forms and functions of poetic voice (Donne / Browning / Duffy / Heaney)

Paper 2

- Writing about Society - the role of the individual in society, and re-creative writing based on set texts which could include The Great Gatsby or The Kite Runner
- Critical commentary - evaluating own writing
- Dramatic Encounters - conflict in drama which could include Othello or A Streetcar Named Desire

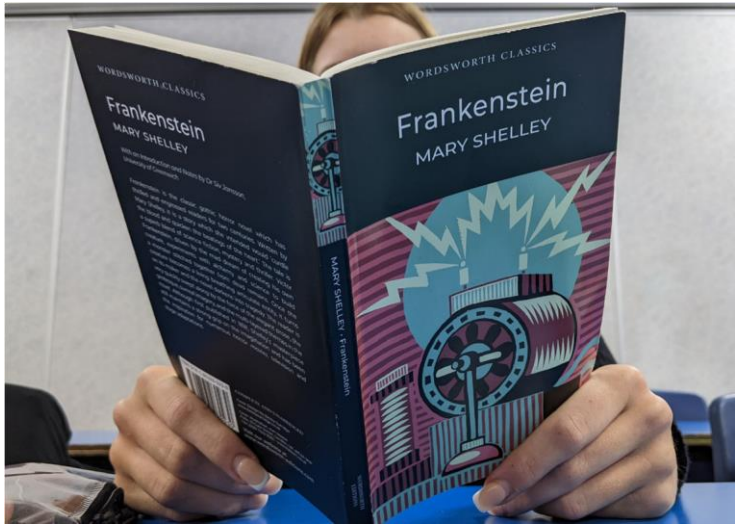
16

During this course you will be expected to complete the following Controlled/Supervised Assessments:
A personal investigation that explores a specific technique or theme in both literary and non-literary discourse (2,500-3,000 words). This will be completed during Year 13.

The examination board for this specification is:
AQA English Language and Literature Specification A

The assessment for this subject will follow this pattern:

Unit	Marks Available	% of A level
Paper 1	100	40%
Paper 2	100	40%
Coursework	50	20%



Why study Further Mathematics?
Students taking Further Mathematics find it to be a rewarding and stimulating experience. Studying this subject will broaden and deepen the mathematics covered in A level Mathematics. Some universities are so keen to attract students with a Further Mathematics A Level that they are willing to offer incentives.

What topics are covered?
A Level Further Maths students study advance work on calculus, series, complex numbers, polar coordinates, statistical modelling and testing, and further mechanics.

The entry requirements
Only students following the Higher GCSE should consider A Level Further Mathematics and a GCSE Grade 7, 8 or 9 is necessary.

How is the course examined?
Two 1.5 hour papers (Further Pure mathematics) and two 1.5 hour papers (Option) taken in the June of Y13.

What skills will I develop through studying Further Mathematics?
You will learn how real life situations can be modelled and analysed using mathematics. You will develop your skills in reasoning logically and learn how to construct a mathematical argument.

What career paths does Further Mathematics lead on to? An A level in Further Mathematics is always in demand in the job market and at universities. Career opportunities range from economics and business, through biological and medical sciences to engineering and design. Some prestigious universities will only accept students with Further Mathematics qualifications when studying Maths as an undergraduate.





Geography AQA



Level 3 BTEC Health and Social Care

Why study A Level Geography?

Geography is a broad based subject that can be successfully combined with any of the others on offer at A-Level. It provides both excellent preparation for the independent learning required at university and the wider skills sought by employers. By studying geography you will learn in a variety of ways such as by using maps, GIS skills, data analysis, photos, videos, podcasts and through residential fieldwork. You will be encouraged to frame your own questions using higher level thinking skills and demonstrate your grasp of complex issues through report and essay writing.

Geography is all about your world so is 100% relevant. It covers some of the big issues faced by the world that will impact on your life and it allows you to apply knowledge and understanding from other subjects to what is really happening. Geography also enables students to develop important, useful skills in decision-making and issue evaluation. Finally the department has a team of well-qualified, dedicated and enthusiastic teachers.

What will I study?

The examination board for this specification is AQA A level Geography.

The course is divided equally into Physical Geography, Human Geography and Fieldwork; further details on the specific components can be found on the AQA website.

Examination components:

Two equally weighted exams will provide 80% of the marks and are divided equally between physical and human topics. In addition, a piece of coursework will also be submitted accounting for 20% of the total A Level mark.

For A Level Geography there is a compulsory requirement for fieldwork to be undertaken. The fieldwork element of the course will consist of individual day visits to meet the demands of the specification. During the second year students will also undertake independent fieldwork in order to investigate an issue of their choice

that will be submitted as a full piece of coursework. There is also an optional opportunity to travel abroad to study elements of

18

the course. In previous years, pupils have travelled to Italy to study coastal landforms, sea level changes, volcanic features and impacts of eruptions. **What other skills will you develop?**

Through studying geography you will develop your fieldwork and research skills alongside data-handling and interpretive skills using maps, photos, and satellite images. You will also develop the quality of your report writing and most importantly the ability to synthesise and analyse information in all of its forms.

What are the entry requirements? Usually students will need to have at least a Grade 5 at GCSE Level and due to the statistical content a Grade 6 in Maths would be an advantage; however a student who has a broad spectrum of success in other subjects can access the subject.

What career paths does geography lead on to?

Career paths available with A Level Geography are great and varied but often involve sustainability and green issues, real estate and surveying, urban regeneration, energy supply, retail location, managing the effects of hazards and climate change management.



Why study BTEC Level 3 National Extended Certificate in Health and Social Care?

This course is suitable for students who are interested in learning about the health and social care sector as part of a balanced study programme. If you wish to go to university, you will be well prepared with study skills that you can transfer to higher education and throughout your career.

How will I be assessed?

BTEC Nationals are assessed using a combination of internal assessments which are set and marked by your teacher, and external assessments which are marked by the exam board. It is equivalent in size to one A Level.

What topics are covered?

Students will study a number of topic areas across the two years. These may include:

- Human Lifespan Development
- Working in Health and Social Care
- Meeting Individual Care and Support Needs ■ Supporting Individuals with Additional Needs

What skills will I gain from studying Health & Social Care?

During the course, there are opportunities during the teaching and learning phase to give students practice in developing employability skills. Categories included are:

- Cognitive and problem-solving (use critical thinking, approach non-routine problems applying expert and creative solutions, use systems and technology)
- Intrapersonal skills (communicating, working collaboratively, negotiating and influencing, self-presentation) ■ Interpersonal skills (self-management, adaptability and resilience, self-monitoring and development)

The entry requirements

Learners who have a Grade 4 or above and/or BTEC Qualifications at Level 2 in a range of subjects can access the curriculum.

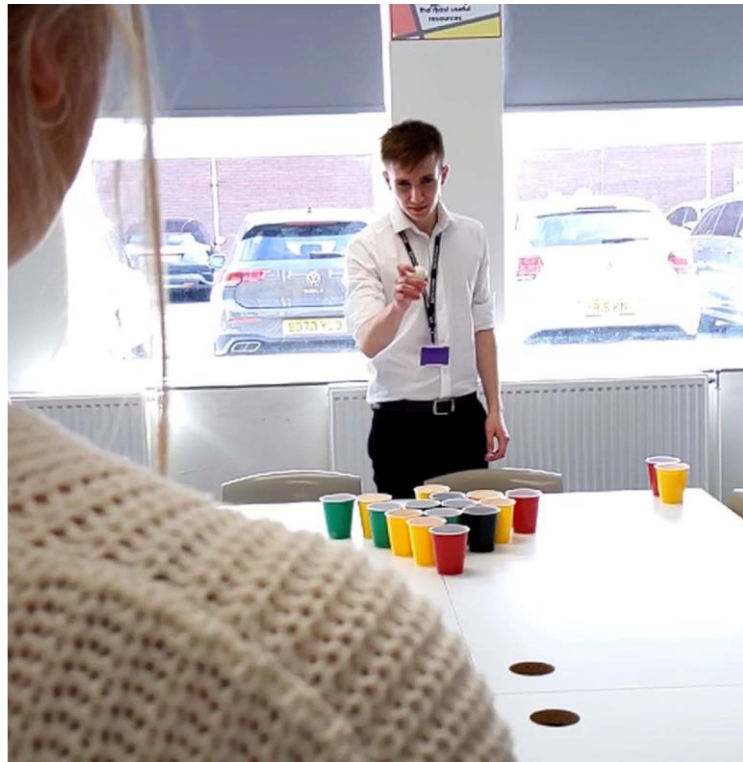
Where can Health and Social Care lead? This course will enable learners to progress to a degree programme chosen from a range of areas in the health and social care sector. This Level 3 BTEC could help you gain entry into careers such as radiography, midwifery and nursing, paramedic science, podiatry and healthcare science.



History AQA



Level 3 BTEC Information Technology



future career. If you are someone who wants to understand the world we live in, whilst gaining a respected academic qualification, this course is for you.

What topics are covered?

Students will study three units over two years. The two examinable units are The Tudors: England, 1485–1603 and Democracy and Nazism: Germany, 1918-1945. The topics covered relate to social and political change in the periods covered. Topics in the Tudor Unit will relate to events such as the break from the Catholic Church, the religious instability under Mary I and the Spanish Armada. In the German Unit, a study of the events after WW1 will take place followed by an in-depth study of the Nazi takeover in 1933 and the racial state they created. The third unit is a 4000 word personal study based upon the British Empire.

What are the entry requirements?

Usually students will need to have at least a Grade 5 in GCSE History, however, a student who has a broad spectrum of success in other subjects can access the subject.

What skills will I develop?

Students studying history at A Level will develop a wide variety of skills. Principally, students develop the ability to understand and analyse issues and events to a high level of competency. The study of history is highly considered by universities and employers alike because it offers many

19
20

other attractive and transferable skills. These sought-after skills include a talent for clear expression, both written and oral, and confidence in putting forward ideas and arguments in a concise manner. Students also gain experience in gathering, investigating and assessing source material, basing conclusions on research and generating ideas, in addition to organising material in a logical and coherent way.

Why study A Level History?

Studying history provides a student with skills which are not confined to the study of the past. Skills of analysis are invaluable in many jobs, and the ability to analyse and then prioritise information is vital to decision making. By studying aspects of social, political, cultural and economic history, it means the course is a perfect combination of skills and knowledge to combine with most other subject choices and keeps your future career options open. Students enjoy learning through a variety of teaching and learning methods, which will fully prepare them for any university level courses and just as importantly, prepare them for their

What career paths would this subject be suitable for?

The skills you have gained will prepare you well for numerous careers. History students often pursue careers where their analytical and critical reasoning skills are highly valued. History students most often pursue careers in law, publishing, journalism, media and writing in all its forms, business and commerce, public sector administration, retail, information handling and politics. It is an interesting fact that more history graduates go on to become business leaders than people who come from any other background. Studying history is a gateway to countless successful career paths.

What trips occur during the course?

Students will have the opportunity to visit sites connected to their studies. Every year two history students visit Poland, on the 'Lessons from Auschwitz Project', run by the Holocaust Educational Trust and all history students will have the opportunity to visit Berlin and Krakow during their course.



Why study BTEC Level 3 National Extended Certificate in Information Technology?

This qualification is designed for learners who are interested in an introduction to the study of creating IT systems to manage and share information, alongside other fields of study, with a view to progressing to a wide range of higher education courses.

What topics are covered?

The objective of this qualification is to give learners the opportunity to develop their knowledge and skills in IT systems, systems management and social media in business. This will enable learners to progress to further study in the IT sector or other sectors. Learners will study three mandatory units and one optional unit:

- Unit 1: Information Technology Systems (externally assessed)
- Unit 2: Creating Systems to Manage Information (externally assessed)
- Unit 3: Using Social Media in Business (internally assessed) Optional Unit:
- Unit 6: Website Development (internally assessed)

This will allow progression to a variety of degrees when combined with other suitable Level 3 qualifications.

The entry requirements

A student who has a broad spectrum of success at GCSE including maths and English can access the subject but a minimum of a Merit at BTEC Level 2 is recommended.

What could this qualification lead on to? When taken alongside other Level 3 qualifications in complementary or contrasting subjects, such as mathematics, physics, science, arts or technology, the qualification gives learners the opportunity to progress to a degree in an information technology discipline or a degree where information technology related skills and knowledge may be advantageous.

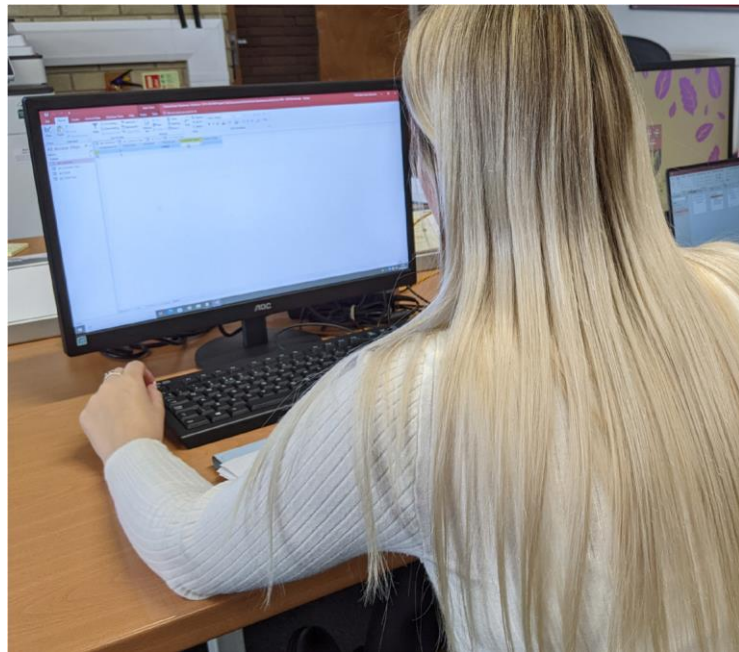
This qualification carries UCAS points and is recognised by higher education providers as meeting admission requirements to many relevant courses. As the content is equivalent in size to one A Level, higher education representatives have confirmed that it is appropriate to allow learners to choose their optional units from a wide range so that they can explore their own choice of areas for further study.

The qualification, when studied with other Level 3 qualifications, is aimed at progression to higher education but also enables learners to



Maths EDEXCEL

develop knowledge and skills needed for entry-level roles related to IT, including vocational apprenticeship roles and trainee/entry-level roles such as a social media specialist, web/content developer or business analyst.



Why study Mathematics?

Mathematics A Level students are in high demand by employers and those with Mathematics A Level earn, on average, 10% more than those without. Also, mathematics is the essential transferable component across all science, engineering, technology and mathematics subjects.

Mathematics is also of great value in the study of economics, business, computing and law. You will be taught by experienced and enthusiastic teachers who will give you plenty of encouragement and support.

What topics are covered?

A Level students study Pure Mathematics, Statistics and Mechanics. Pure Mathematics covers proof, algebra and functions, coordinate geometry in the (x, y) plane, sequences and series, trigonometry, exponentials and logarithms, differentiation, integration and vectors. Statistics covers statistical sampling, data presentation and interpretation, probability, statistical distributions and hypothesis testing. Mechanics covers quantities and units, kinematics, forces and Newton's laws.

The entry requirements

Only students following the Higher GCSE should consider A Level Mathematics and a Grade 7 is the minimum requirement.

How is the course examined?

Two 2 hour papers (Pure Mathematics) and one 2 hour paper (Statistics and Mechanics) taken in the June of Y13.

What skills will I develop through studying Mathematics?

You will learn how real life situations can be modelled and analysed using mathematics. You will develop your skills in reasoning logically and learn how to construct a mathematical argument.

21

22

What career paths does Mathematics lead on to?

An A level in mathematics is always in demand in the job market and at universities. Career opportunities range from economics and business through biological and medical sciences to engineering and design. A level Mathematics is an essential requirement for many courses at university.



Music AQA

What topics are covered in A Level Music?

Year 12 is split into 3 components. Component 1 focuses on listening and theory, where you will study Baroque Solo Concerto's, the operas of Mozart and examine the development of Popular Music. You will study the contributions from artists such as Stevie Wonder, Muse and Beyonce. Component 2 requires you to focus on your own performing, either as a soloist or in an ensemble. In Component 3, you will compose one piece of music. This is a 'free composition', which allows you to choose a specific genre of your choice.

Year 13 is also split into 3 components. In component 1, you will study the romantic piano music of Chopin, Brahms and Grieg in detail and look at the development of Musical Theatre. You will study the contributions of composers such as Jason Robert Brown, Richard Rogers and Stephen Sondheim. In component 2, you will perform contrasting pieces on a solo instrument or voice. This will be recorded for assessment. Finally, in component 3, you will compose a piece of music responding to a brief.

The entry requirements

If you are studying A Level Music, it is recommended that you are at least Grade 4 standard on your instrument and achieved at least Grade 6 for GCSE Music or a Merit for BTEC Music.

What skills will I develop through studying the subject?

- Extend the GCSE skills of performing, composing and listening
- Perform using an unrestricted range of instruments or your voice
- Develop skills in handling basic music technology software including Cubase and Sibelius
- Explore musical language by studying set works
- Appreciate change and development in a specific musical style, genre or traditions

What career paths does the subject lead on to?



Why study Music?

Studying Music at A Level gives you the power to engage with music more deeply as a performer, composer and listener. Although A Level Music involves a lot of creative work, the theoretical study of music history and theory is sufficiently rigorous that it is accepted as a serious academic subject for entry to most university courses. Recent Music students have gone on to study languages and humanities (and of course music) and an even wider range of courses, including sciences and the performing arts.



Level 3 Performing Arts

Possible careers in music include performing, composing and arranging, education and music therapy, music administration and management, music production and the wider creative industries.

Other information

The Friary Music Department also offers a wide range of extracurricular ensembles including Concert Band, Jazz Band, Chamber Orchestra, Senior Choir, Salsa Group, Brass Ensemble and Celtic.



Performing Arts – Cambridge Technical – Level 3 Extended Certificate

Why study Performing Arts?

Performing arts is placed at the heart of school life. Students who take the course can expect to be challenged in all three disciplines: acting, dancing and singing. In addition, students will have access to a purpose-built theatre with raked seating for 310 people, as well as a drama studio, dance studio and a huge range of professional sound

and lighting equipment. The course also offers students the opportunity to participate in many large- scale productions throughout the year, including musical theatre, modern drama and variety shows.

What topics are covered?

During the course, students will have tuition from specialist staff in acting, dancing and singing. The skills that are learned and refined are then applied to productions and individual performances. The course is also designed to allow students to explore the reality of the performing arts industry; in order for this to happen students will undertake extended research projects allowing them to visit performing arts organisations and interview professionals from both the performance and production areas of the industry.

The entry requirements

It would be beneficial for students to have taken a performing arts related subject at GCSE or BTEC Level 2, but this is NOT mandatory. A Grade 6 or above in English is highly recommended.

How is the course examined/assessed?

The course is assessed through a combination of performances, portfolio-based coursework and three externally examined units. The externally examined units centre upon the creation of a written performance proposal and some recorded performance and presentation work; the work for these units is produced in controlled conditions over the course of two weeks. The written elements of the course are heavily based on research with professionals and professional organisations, as well as charting the progress of individual students’ progression.

23

24

What skills will I develop through studying the subject?

The course provides students with skills to improve their stage-craft, as well as developing high level communication and team-work. Through participation in productions and intensive workshops, students learn to utilise various performance approaches (e.g. Stanislavskian and



Physics AQA

Brechtian theatre) in order to broaden their theatrical knowledge and range.

What career paths does the subject lead on to?

Students who have previously taken the course have gone on to gain full scholarships at Mountview Drama School, as well as gaining highly sought after places at top drama schools, such as GSA, Birmingham School of Acting and LIPA. We also have a large number of students that go on to study drama at university, as well as subjects such as English, history, psychology and journalism.

Additional information

The department runs a range of excursions including an annual two-day trip to the West End to watch performances and participate with West End performers. Many of our students also study for examinations with The London Academy of Music and Dramatic Arts alongside the core course.



Why study Physics?

Physicists deal with enormous questions and problems. Do you want to investigate the limits of space or the beginning of time? Do you want to understand more about the technology around us? How about saving the planet or making people better when they get ill?

We’d be a bit lost without physics. Think of all the gadgets we take for granted and the electricity supply that charges and powers them. The World Wide Web was invented by a physicist. Imagine the world without the internet!

What skills will I develop through studying the subject?

There are millions of students in the world and to get a job you have to stand out. People are always impressed by a qualification in physics.

Whatever your career plans are, the knowledge and skills you gain by studying physics will be useful. Physics allows you to develop numerous transferable skills that are valued by employers and can complement your other subject choices, whatever they might be. These include a practical approach to problem solving, often using mathematical formulation and solution, the ability to reason clearly and to communicate complex ideas, IT and self-study skills and investigative and experimental skills.

What topics are covered?

You will develop your knowledge of energy, forces, waves, radioactivity, electricity and magnetism and how these ideas work together; therefore grasping the universal principles that apply to the smallest atoms and the largest galaxies. You will begin to learn about ideas that might be new and particularly exciting to you such as quantum physics and relativity. A considerable amount of your time in physics lessons will be spent doing practical work, learning skills and techniques necessary for the practical elements of the exam. These skills will be very useful if you decide to study physics further, perhaps at degree level.

What are the entry requirements? At least grade 6/6 at GCSE Combined Science or grade 6 in GCSE Physics. Students should also achieve at least grade 6 at GCSE Mathematics.

What career paths does the subject lead on to?

Whether you want a career in the field of space, energy, medicine, buildings and structures, education, sports and games, music and television or transport there are opportunities for physicists. These could be cutting edge jobs like designing technology to enhance sport



Psychology AQA



Religious Studies WJEC

performance or developing new renewable energy technology. You might aspire to be a physicist working at a particle accelerator answering some of the biggest questions still left to be answered.

Other useful information

Our students usually have the opportunity to attend lectures and learn more about a particle accelerator in the UK, The Diamond Light Source. It is always a fascinating and eye-opening trip for our students.



Why study Psychology?

Psychology is a fascinating and diverse subject that incorporates a wide range of exciting topics and investigates many questions about human behaviour, ranging from why people obey authority to what causes OCD and phobias. The AQA Psychology A Level is the ideal introduction to psychology as a subject and covers all the basics of what psychology is and its history. The year 1 topics provide an excellent overview of many of the famous and classic studies, whilst the year 2 topics allow a more modern application of psychology. There are many exciting

opportunities whilst studying psychology at The Friary; from meeting and interviewing convicted criminals to carrying out your own experiments.

What topics are covered?

- Social Influence (including conformity, obedience and independent behaviour), memory (including types of memory and why we forget), attachment (including types, explanations and stages of attachment).
- Approaches (including behaviourist, cognitive, biological), psychopathology (including phobias, depression and OCD), research methods (including experiments, observations, selfreport techniques and correlations, understanding the scientific process, data analysis and handling).
- Issues and debates (including free will and determinism, nature/ nurture debate, holism and reductionism), gender (including theories of the development of gender and gender dysphoria), eating behaviour (including explanations of eating behaviours, dieting and disorders) and forensic psychology (including why people commit crime, how we deal with crime and how we catch criminals).

25

26

How is the course examined?

There are three 2 hour papers taken at the end of Y13.

Entry requirements

It is recommended that you have at least a Grade 6 in GCSE Combined Science or in the separate GCSE Biology, Chemistry and Physics courses and a Grade 6 in English and Maths. Students having studied psychology at GCSE need to have a Grade 5 or more to

continue onto the A Level course. However, it is not necessary to have studied GCSE Psychology to take the subject at A Level.

What career paths does the subject lead onto?

Psychology provides you with many useful skills which are sought after in many sectors of the workplace, including health, counselling, teaching and business. If you want to work as a Chartered Psychologist further study is required, and your degree will have to be accredited by the British Psychological Society. Accredited degrees allow you to undertake further post-graduate training leading to careers in clinical psychology, social work, psychotherapy and forensic psychology.



Why study Religious Studies?

Are you open to new ways of thinking? Ever since humankind started to think, religion has been a fundamental part of our development. In the 21st century, religion still addresses the same eternal human questions about life and death, values and relationships, right and wrong.

This course involves a detailed study of a world religion and its main beliefs. This will develop your interest in religion and your ability to relate it to the wider world. You will also develop an understanding and appreciation of religious thought and its contribution to individuals, communities and societies. This will allow you to begin to reflect on and foster your own values, opinions and attitudes in light of the study.

You will then study arguments for God's existence, examining the work of great philosophers. You will explore the problem of evil and suffering and how this challenges God's goodness. You will study how compatible religion is with science, examine miracles and study life after death. You will have the opportunity to engage in discussion and debate. You will consider some of the classic theories of morality and will apply them to ethical issues such as animal testing and capital punishment. Overall, Religious Studies A Level is very thought provoking, enabling you to question many aspects of belief and to examine issues relevant to today's world.

What are the entry requirements for the course?

Grade 5 in GCSE Religious Education is desirable. If you have not studied GCSE Religious Studies, then a broad spectrum of success in humanities subjects at GCSE is required.

What will you study during the course?

We are offering Eduqas Religious Studies, which is split into three components:

- The first component will consist of a detailed study of a world religion. There will be four themes within this: religious figures and sacred texts; religious concepts and religious life; significant social and historical developments in religious thought; religious practices and religious identity
- The second component will focus on Philosophy of Religion. There will be four themes within this component: arguments for the existence of God; challenges to religious belief; religious experience; religious language
- The third component will focus on Religion and Ethics. There will be four themes within this component: ethical language and thought; deontological ethics; teleological ethics; freewill and determinism

What skills will I develop during the course?



Level 3 BTEC Science (Applied)



Sociology AQA

This course encourages students to develop their interest in a study of religion and its relation to the wider world. You will adopt an enquiring, critical and reflective approach to the study of religion and begin to reflect on and develop your own values, opinions and attitudes. During the course you will have the opportunity to recall, select and deploy specified knowledge. You will then identify, investigate and analyse questions and issues arising from the topics studied. You will develop clear and logical thinking alongside critical evaluation and negotiation. The capacity for independent thought is key!

What careers does Religious Studies lead on to?

The skills that you will learn in Religious Studies A Level will be useful to you in any number of careers; teaching, law, human resource management, social work, youth work, journalism or Civil Service to name a few. If you're thinking of furthering your education at university then a Religious Studies A Level is looked upon favourably for undergraduate courses due to the invaluable skills you will develop.

Why study BTEC Level 3 Applied Science?

Do you enjoy learning about how things work, how science affects the world around you and how it is used in the workplace and in industry? Do you enjoy learning about science through a variety of different teaching methods including practical work, presentations and group discussion? Would you like to learn about science in fantastic facilities with state-of-the-art technology, in a Science Department bursting with enthusiasm? Do you wish to study science rather than the separate subjects, biology, chemistry or physics? If so, then the BTEC Level 3 in Applied Science is the course for you.

The entry requirements

At least grade 5/5 at GCSE Combined Science or grade 5 in the separate GCSE Biology, Chemistry and Physics courses. Students should also achieve at least grade 4 at GCSE Mathematics.

What topics are covered?

In Year 12 you will study 2 units. The first unit is Principles and Applications of Science 1. The topic areas covered in this unit include: animal and plant cells; tissues; atomic structure and bonding; chemical and physical properties of substances related to their uses; waves and their application in communications.

The second unit is Practical Scientific Procedures and Techniques. This unit introduces you to standard laboratory equipment and techniques, including titration, colorimetry, calorimetry, chromatography, calibration procedures and laboratory safety.

How is the course examined/assessed?

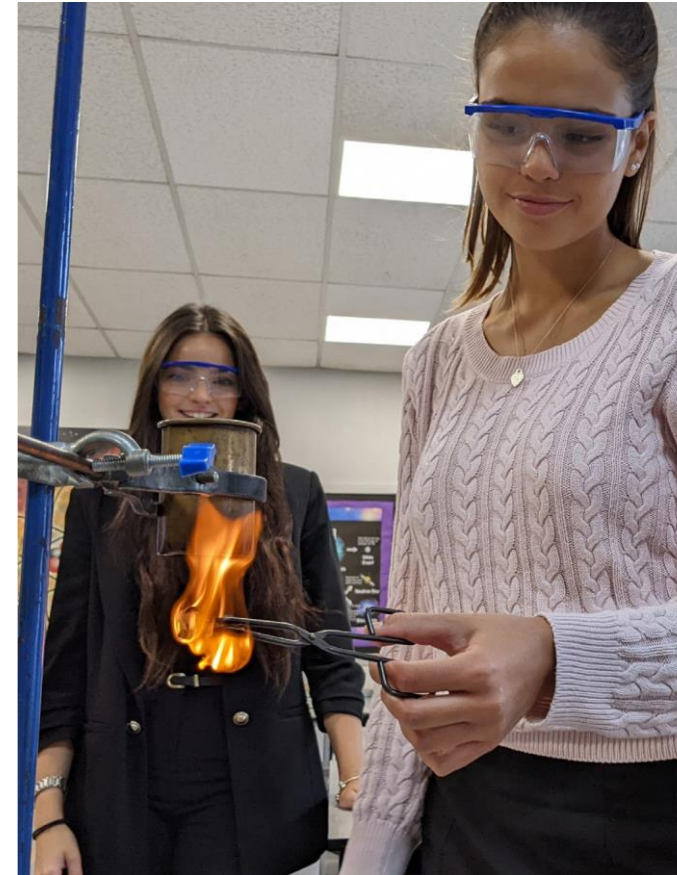
There is a combination of assessment styles to support and encourage you to succeed in the workplace. Firstly, a series of set tasks set in a work-related scenario. Next, you will be required to complete, in controlled conditions, a practical task tackling an everyday challenge and finally, there is a written exam.

27

28

What next?

The course will equip you with the knowledge and practical skills required to either enter employment as a science technician or to enter university to study science related courses. Many Applied Science students gain careers in medical laboratory analysis, biomedical science, forensics, research, teaching or nursing.



Why study Sociology?

Sociology is a relevant and exciting subject that throws new light on the world we live in. It is a social science that seeks to discover and explain how the institutions around us affect the way we behave both as individuals and communities.

Within sociology, students are given the opportunity to share their thoughts on how the world works, whilst analysing and evaluating the theories offered by a number of key individuals and perspectives.

Students are able to enjoy a wide variety of lessons and gain key skills as both independent and group learners. Throughout the course students are also offered opportunities to undertake their own research and are regularly encouraged to present this work to the group.

If you are someone who enjoys being given the chance to express your feelings on the key modern issues within society, then sociology is the right subject choice for you!

What topics are covered?

- Families and Households
- Education and Research Methods
- Beliefs in Society
- Crime & Deviance and Theory & Methods

The entry requirements

Due to the extended writing element of the course, it is recommended that students achieved a Grade 6 in at least one humanities subject or English Language or Literature.

What skills will I develop through studying Sociology? The course is designed to enable students to:

- Acquire knowledge and a critical understanding of the contemporary world they live in using relevant examples
- Understand the significance of theories and conceptual issues in Sociological debate
- Understand and evaluate Sociological methodology research methods in order to carry out independent research
- Reflect effectively on their own experiences of the world and consider the experiences of others
- Develop the confidence and skills to enable them to function well in their future educational pursuits and careers

What career paths does the subject lead on to?



Level 3 BTEC Sport



The Friary Sixth Form Centre

Sociology is a strong academic subject that is regarded highly by universities. It can open the door to many fulfilling and interesting endeavours both within further education and employment. Sociology is a very good subject choice for those who may be interested in social work, politics, probation services, counselling, social research, charity work and journalism amongst others.

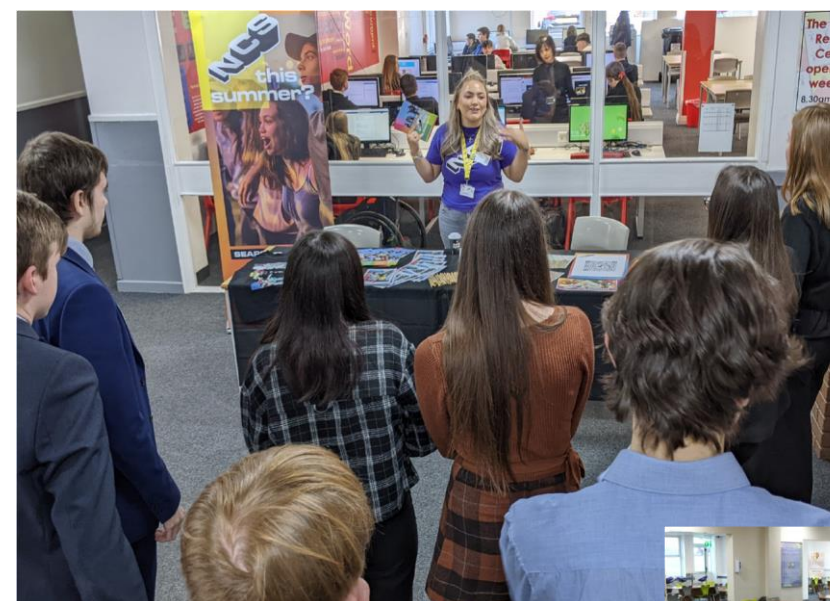


- Anatomy and Physiology where you will explore how the skeletal, muscular, cardiovascular and respiratory systems function and the fundamentals of the energy systems
- Fitness Training and Programming for Health, Sport and Well-being where you will explore client screening and lifestyle assessment, fitness training methods and fitness programming to support improvements in a client's health and wellbeing
- Professional Development in the Sports Industry where you will explore the knowledge and skills required for different career pathways in the sports industry. Learners will take part in, and reflect on, a personal skills audit, career action plan and practical interview assessment activities
- Sports Leadership where you will have the opportunity to develop as a sports leader and analyse effective leadership strategies

What are the entry requirements?

Grade 4 or above in GCSE Physical Education including at least a Grade 4 in the theory paper or a Merit in Cambridge National Sport Studies. Also at least a Grade 4 in Science is preferable. Those who have not studied GCSE Physical Education or Cambridge National Sport Studies should see the Subject Leader – Mr Foster

How is the course



The Sixth Form Centre offers students a spacious and well-resourced space in which to study. There are large tables to facilitate students' collaborative work and some soft furnishings are available for a level of relaxation at break times. The Sixth Form Centre is a quiet working area throughout the school day to ensure that all students can use their Guided Learning periods as effectively as possible.

Students also benefit from computer access around the room and free Wi-Fi should they wish to bring their own devices into school. In addition to our whole-school canteen facilities, Sixth Form students have their own hot drinks vending machine.



Why study BTEC Level 3 National Extended Certificate in Sport? The department prides itself on building the confidence of its students by creating a supportive and engaging environment to develop and enhance their knowledge. A wide variety of transferable skills are gained from this course and we tailor the learning experience to individual needs. We also have talented sports teams with a number of District, County, Regional and National performers within them.

What topics are covered?

Students will study four topic areas across the two years and the certificate is equivalent to one A Level. The topic areas are:



examined/assessed?

There is one external exam in the Anatomy and Physiology section and a controlled assessment in the Fitness Training and Programming for Health, Sport and Well-being. In the Professional Development in the Sports Industry section and the Sports Leadership section, the course is assessed through on going coursework pieces.

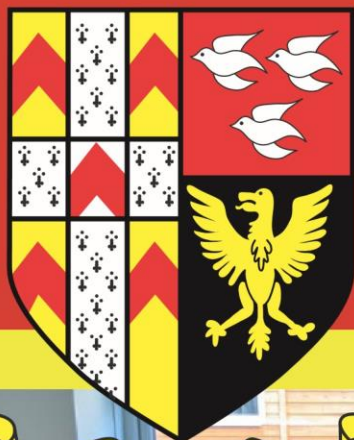
What career paths does the subject lead on to?

You will find this course suits most professions as communication, team work and leadership are integral qualities. However, it is more specific to careers in: leisure industry e.g. fitness and leisure management, fitness instruction and training, personal trainer, physical training instructor, teacher/lecturer, physiotherapy, sports coaching and instruction, sports development and as a professional sports man or woman.

Extra-curricular opportunities

At The Friary School, we believe it is vital that pupils experience a range of opportunities both inside and outside the classroom. Therefore, as an additional qualification we offer the Level 2 Community Sports Leaders Award which is a fantastic way of enhancing leadership, coaching and organisational qualities, which

can assist you with achieving your aspirations. We also offer ski trips to Europe and America which are extremely popular.



The Friary School

Eastern Avenue
Lichfield
Staffordshire
WS13 7EW

Tel: 01543 267400

Email: sixthform@friary.greywoodmst.co.uk

Fax: 01543 267499

Website: www.friaryschool.com